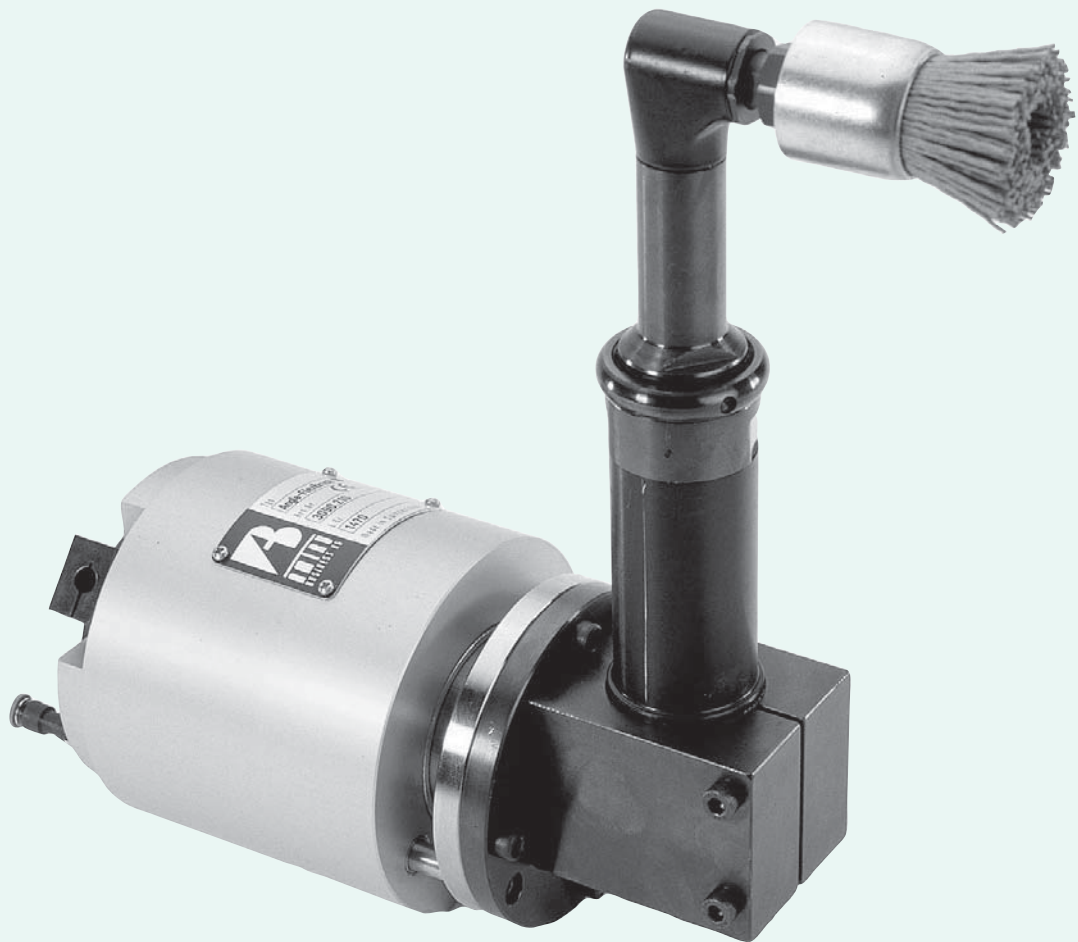




ANGLE-FLEXIBRUSH SERIES 100



ANGLE-FLEXIBRUSH SERIES 100



I La spazzola angolare serie 100 può essere utilizzata per sbavare o per smussare angoli e superfici.

Questo prodotto è particolarmente adatto in aree difficilmente accessibili.

L'albero della spazzola è compensato assialmente con la pressione necessaria che sarà calcolata dal programma.

L'usura della spazzola è monitorata da un sensore e compensata dal programma.

La spazzola angolare può essere fissata sia in modo stazionario su un supporto (Toolstand) sia direttamente su un braccio del robot.

Il robot può anche utilizzare diversi tipi di spazzole grazie a un cambio rapido.

Sull'ANGLE-FLEXIBRUSH possono essere utilizzate normali spazzole commerciali.

Per garantire il funzionamento ottimale del motore è necessario utilizzare aria compressa filtrata e lubrificata.

GB The angle brushing tools ANGLE-FLEXIBRUSH Series 100 can be used for deburring after machining, rounding of sharp edges or, depending on the brush type, for light deflashing tasks.

It is particularly well suited to work in badly accessible areas.

The brushing spindle is axially compliant while the necessary pressure is monitored by program control.

The wear of the brush is monitored by a sensor and compensated by program control.

The brushing tool can either be mounted stationary onto a tool stand (Toolstand) or onto the robot arm.

If these tools at the robot have to be changed automatically, a tool changing system (Tool-Changer) is available.

Commercially available cup brushes can be used.

To assure an optimal life of the air motors the compressed air must be cleaned and lubricated.

D Die Winkel-Bürstwerkzeuge ANGLE-FLEXIBRUSH Serie 100 dienen je nach Bürsteinsatz zum Entgraten nach dem Bearbeiten, verrunden von scharfen Kanten oder für leichte Verputzarbeiten. Das Werkzeug eignet sich sehr gut zum Entgraten schlecht zugänglicher Stellen.

Der Bürsteinsatz ist axial beweglich gelagert. Die Bürste passt sich so optimal den Konturen an.

Die Anpresskraft kann vom Roboterprogramm gesteuert werden.

Der Bürstenverschleiss wird mittels Sensor überwacht und von der Robotersteuerung kompensiert.

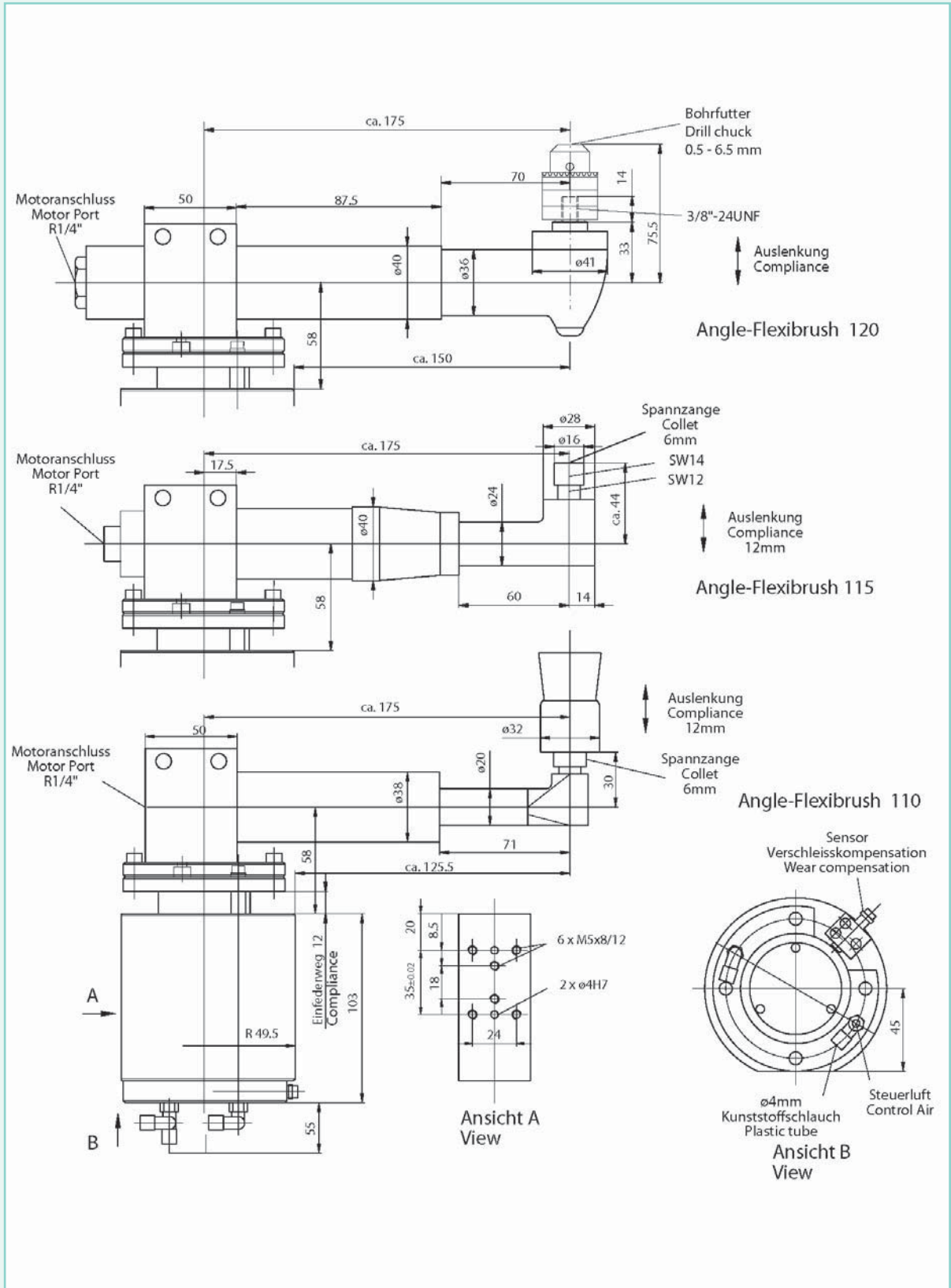
Das Bürstwerkzeug kann entweder am Roboterarm oder stationär an einem Werkzeugständer (Toolstand) angebaut werden.

Sollen diese Werkzeuge am Roboter automatisch gewechselt werden, so steht ein Werkzeug-Wechselsystem (Tool-Changer) zur Verfügung. Es können handelsübliche Bürsteinsätze verwendet werden.

Für eine optimale Funktion der Luftmotoren wird gereinigte und geölte Druckluft benötigt.



ANGLE-FLEXIBRUSH SERIES 100



ANGLE-FLEXIBRUSH SERIES 100



DATI TECNICI	Angle-flexibrush 110	Angle-flexibrush 115	Angle-flexibrush 120
Potenza motore	210 W	250 W	400 W
Velocità rotazione a vuoto	4100 g/min	4500 g/min	4000 g/min
Movimento di compensazione assiale	.12 mm	.12 mm	.12 mm
Forza di compensazione a 6 bar	.60 N	.60 N	.60 N
Avanzamento	5-100 mm/sec	5-100 mm/sec	5-100 mm/sec
Consumo di aria	5.4 l/sec	9 l/sec	7.5 l/sec
Ingressi alimentazione aria	.G1/4, 8/4 mm	.G1/4, 8/4 mm	.G1/4, 10/4 mm
Montaggio spazzola	.pinza Ø6 mm	.pinza Ø6 mm	.pinza Ø6 mm
Peso	.4 Kg	.4 Kg	.4.6 Kg
Sensore compensazione usura	.24 V induttivo	.24 V induttivo	.24 V induttivo
Codice articolo	.3090.210	.3090.215	.3090.220

ACCESSORI OPZIONALI

		Codice
Spazzola in carburo di nylon		.3050.002
Spazzola in carburo di nylon		.3050.001
Mandrino		.8997.002

SPECIFICATIONS	Angle-flexibrush 110	Angle-flexibrush 115	Angle-flexibrush 120
Power	210 W	250 W	400 W
Idling speed	4100 rpm	4500 rpm	4000 rpm
Compliance axial movement	.12 mm	.12 mm	.12 mm
Compliance force at 6 bar	.60 N	.60 N	.60 N
Feed forward rate	5-100 mm/sec	5-100 mm/sec	5-100 mm/sec
Air consumption	5.4 l/sec	9 l/sec	7.5 l/sec
Air connections	.G1/4, 8/4 mm	.G1/4, 8/4 mm	.G1/4, 10/4 mm
Brush mounting	.collett Ø6 mm	.collett Ø6 mm	.collett Ø6 mm
Weight	.4 Kg	.4 Kg	.4.6 Kg
Sensor wear compensat.	.24 V inductive	.24 V inductive	.24 V inductive
Article-No.	.3090.210	.3090.215	.3090.220

OPTIONAL ACCESSORIES

		Code
Brushes, Nyloncarbide		.3050.002
Brushes, Nyloncarbide		.3050.001
Drill chuck		.8997.002

TECHNISCHE DATEN	Angle-flexibrush 110	Angle-flexibrush 115	Angle-flexibrush 120
Motorleistung	210 W	250 W	400 W
Leerlaufdrehzahl	4100 min ⁻¹	4500 min ⁻¹	4000 min ⁻¹
Auslenkweg achsial	.12 mm	.12 mm	.12 mm
Auslenkraft bei 6 bar	.60 N	.60 N	.60 N
Vorschub	5-100 mm/sec	5-100 mm/sec	5-100 mm/sec
Luftverbrauch	5.4 l/sec	9 l/sec	7.5 l/sec
Luftanschlüsse	.G1/4, 8/4 mm	.G1/4, 8/4 mm	.G1/4, 10/4 mm
Bürstenaufnahme	.Spannzange Ø6 mm	.Spannzange Ø6 mm	.Spannzange Ø6 mm
Gewicht	.4 Kg	.4 Kg	.4.6 Kg
Sensor Verschleisskomp.	.24 V induktiv	.24 V induktiv	.24 V induktiv
Artikel-Nr.	.3090.210	.3090.215	.3090.220

Ergänzendes Zubehör

		Artikel-Nr.
Bürsten Schleifnylon		.3050.002
Bürsten Schleifnylon		.3050.001
Bohrfutter		.8997.002